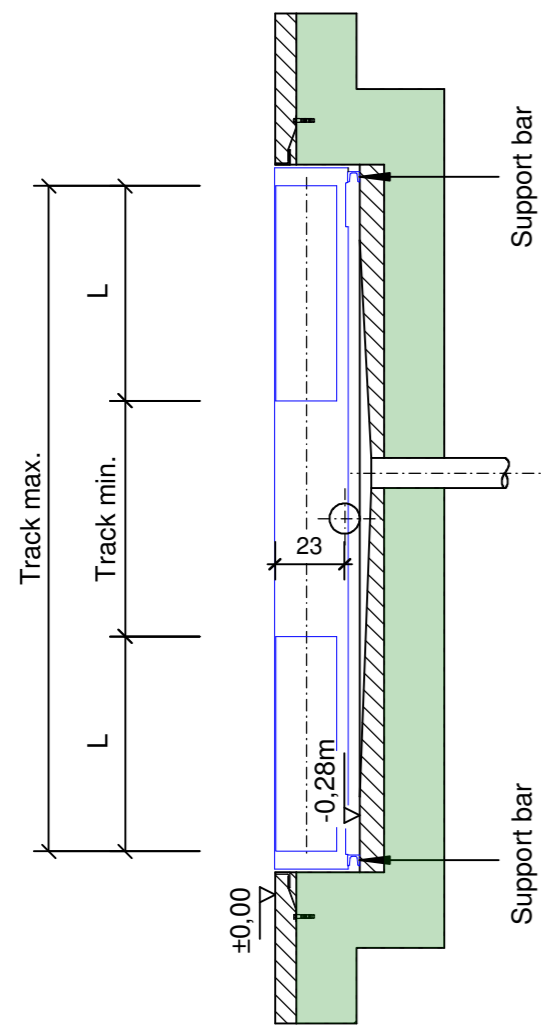
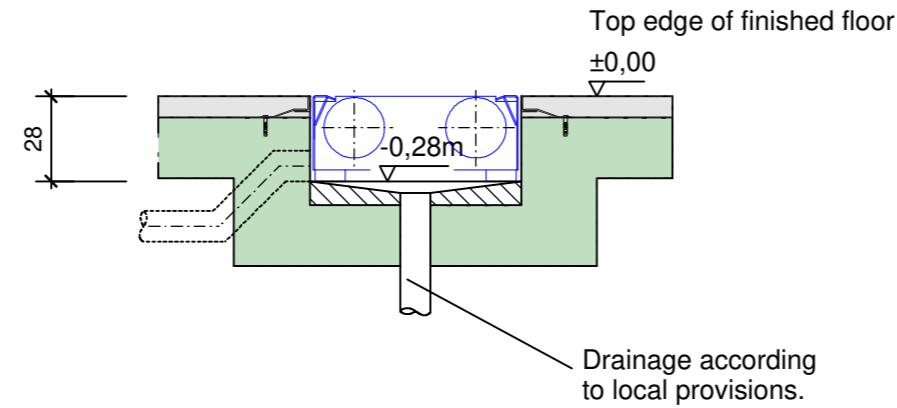


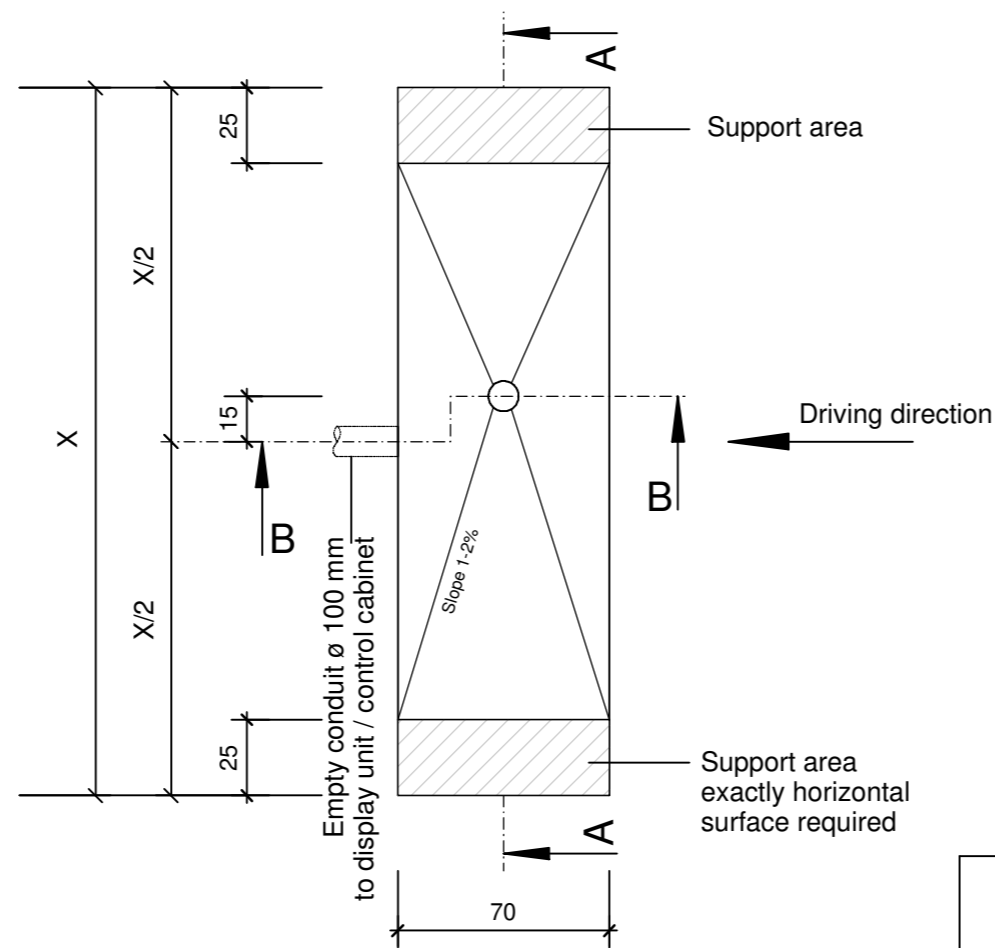
Section A - A



Section B - B



Floor plan



Installation plan for:

Roller brake tester for cars
 MBT 2100, 2200 LON, 2250 EURO
 Floor assembly RS 2 / 4 / 5 closed
 with and without scale
 with and without lifting bar

Please note:

All dimensions [m, cm] must be checked on site.
 Concrete grade min. C 20/25 (DIN EN 1992).
 Use max. 45° elbows for assembling the empty conduits.
 Route the power supply cable (cf. below) to the control cabinet
 allowing an excess length of min. 2 m.
 We recommend to use an iron angle frame as edge protection for the foundation pit.

If the brake tester is equipped with a lifting bar, route a compressed air line R1/4 or DN 8.8 bar to the foundation allowing an excess length of min. 2 m. Depending on the position of the compressed air connection, a separate empty conduit must be provided.

Roller set covers (optional) have a protrusion of approx. 2 cm above top edge of finished floor.
 For combination of lifting bar with roller heating, see separate installation plan.

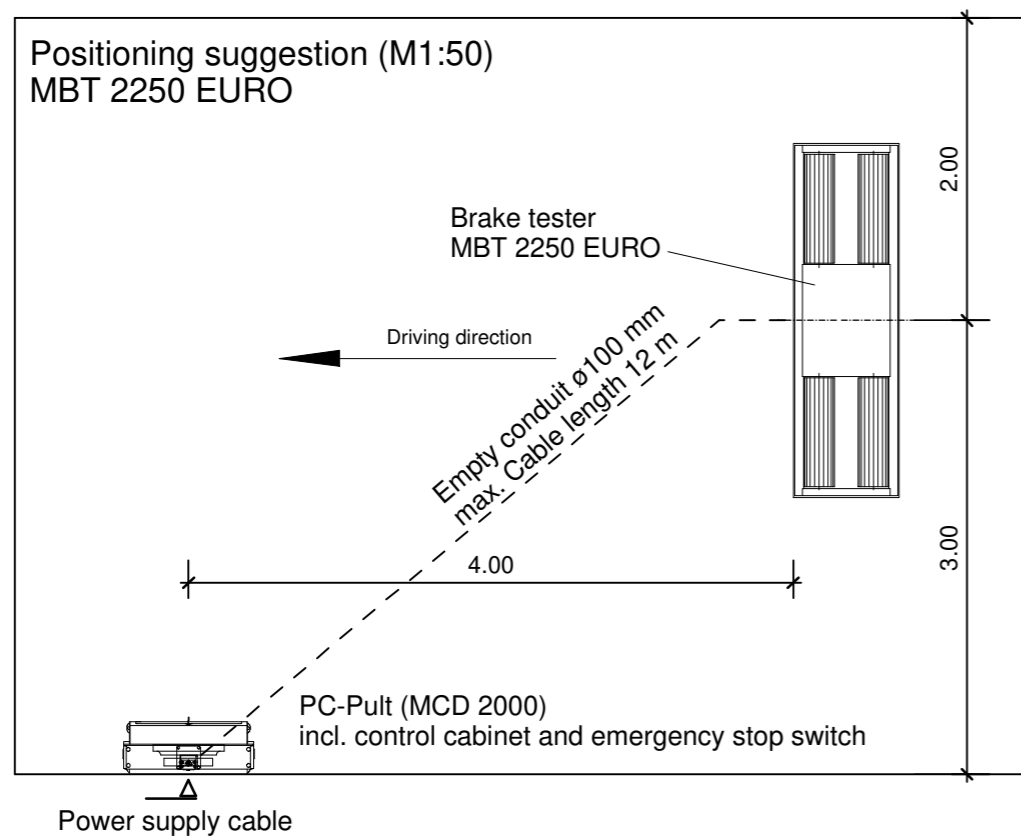
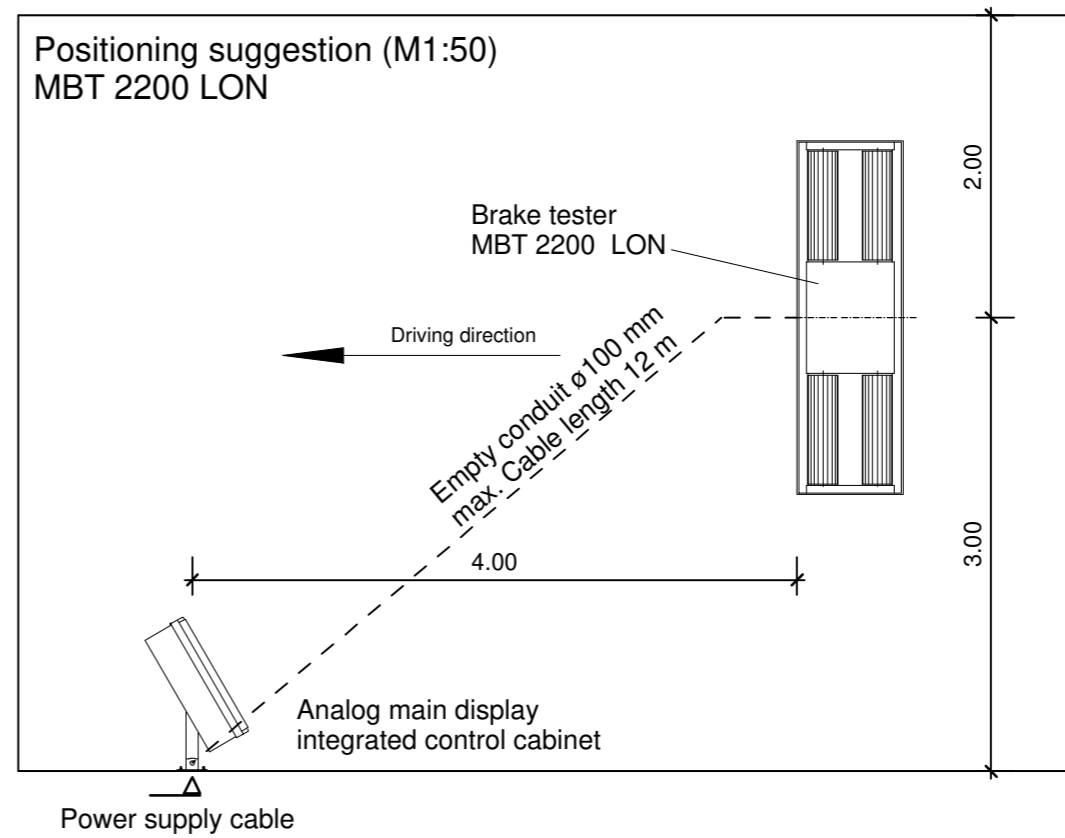
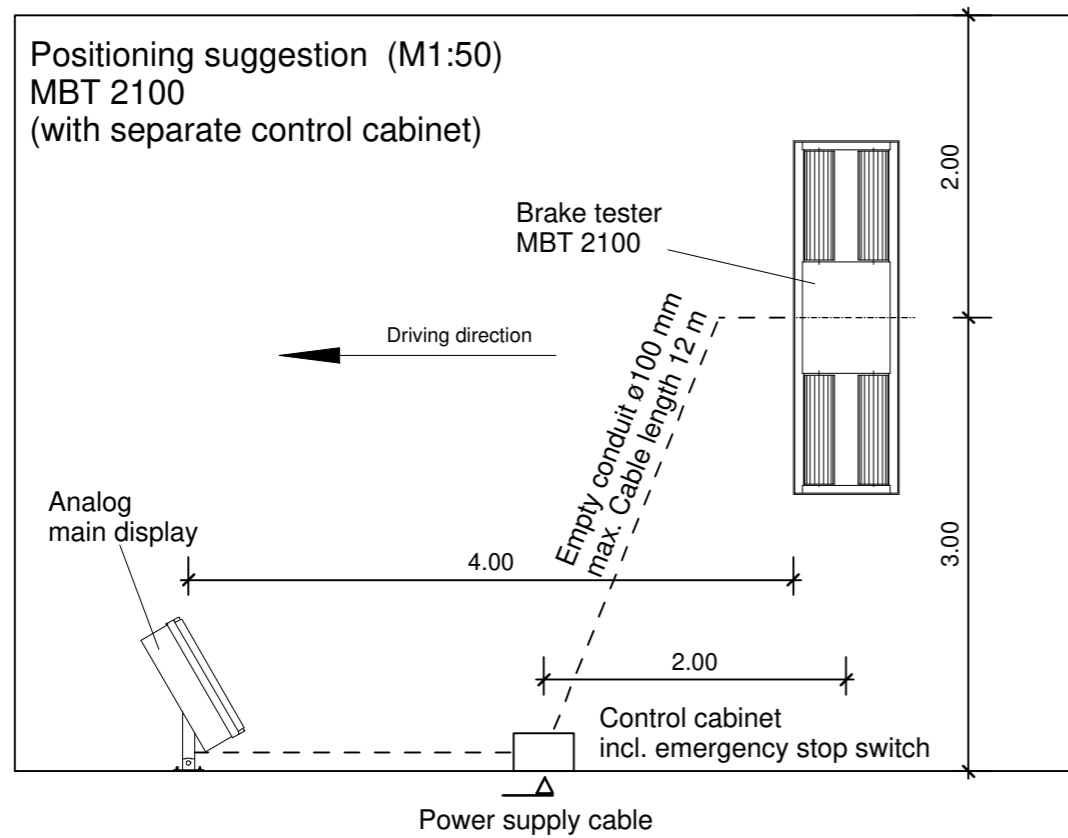
Dimensions :

Roller set No:	Track width max. [mm]	Track width min. [mm]	Usable roller length L [mm]	Foundation length X [m]	max. axle load (traversable) [t]	Net weight [kg]
2	2200	780	710	2,34	Standard 3,0	400
					Option 4,0	400
4	2500	780	860	2,67	Standard 3,5	500
					Option 4,0	500
5	2800	780	1010	2,95	5,0	600

Drive power [kW]	2 x 3	2 x 4
Drive voltage [V]	3x 400 V +N+PE	
Fuse [A time-delay]	25	25
Supply cable size [mm ²]	5 x 4	5 x 4
Start-up	direct	direct

Note protection marks as per DIN ISO 16016		Language	English	State	4
Scale	1:25	Date	12.12.2018	Name	rroemisc
		Check	20.12.2018	Name	thschwar
Description					
Installationplan MBT 2000 Series					
Roller set No 2 / 4 / 5					
Modifications				Drawing No.	
B	15.10.2018	kpflctsc	F0201	
A	06737	13.06.2014	thschwar	D	
Ind. No.:		Date	Name	Index	Sheet
Item.No.:			F0201	D	1
					of
					2
Original size of drawing: A3		Created from:	F0201-B	origin:	S.sedes:
		S.sedes:		S.seded by:	





Notice:

In the case of brake testers without control cabinet, the empty conduit is routed directly to the display unit. Standard cable length 12 m.

When installing analog pointer displays, use flexible power supply cables of category 5 or 6 (IEC 60228).

In countries with left-hand traffic, we recommend to set up the display unit inversely on the right-hand side.

		Note protection marks as per DIN ISO 16016		Language	English	State	4
Scale		Date		Description			
1:50		12.12.2018		Installationplan MBT 2000 Series Roller set No 2 / 4 / 5			
		20.12.2018					
Modifications		Name		Drawing No.			
D	12.12.2018	kpflfsc				
B		14.02.2013	khundeor	F0201			
Ind.	No.	Date	Name				
Item.No.:		F0201		Index		Sheet	
				D		2	
				of		2	
Original size of drawing: A3		Created from: F0201-B		origin:		S.sedes:	
				S.sedes:		S.seded by:	